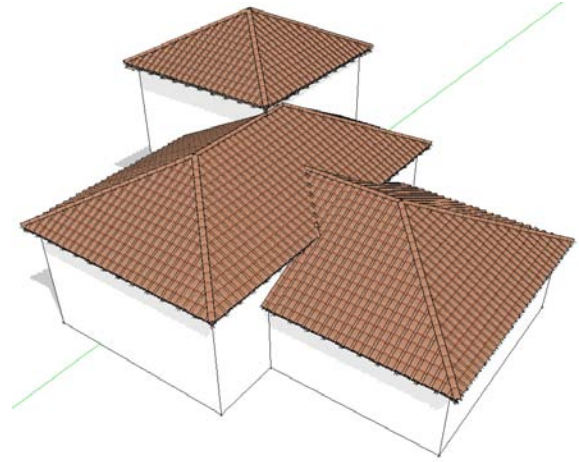
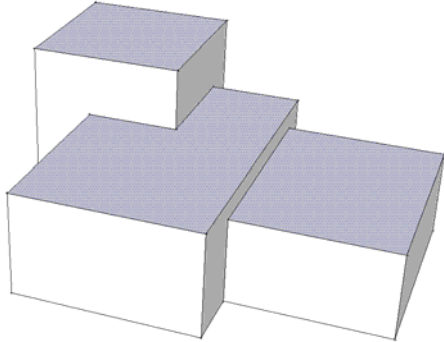


Instant Roof

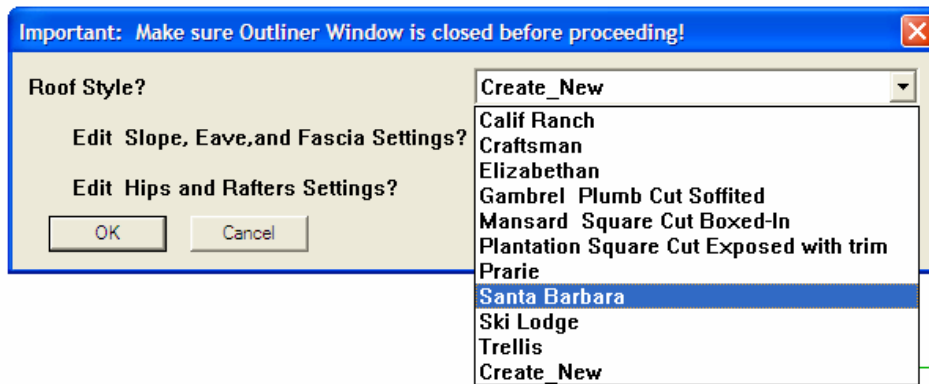
QuickStart Simple Hip Roof



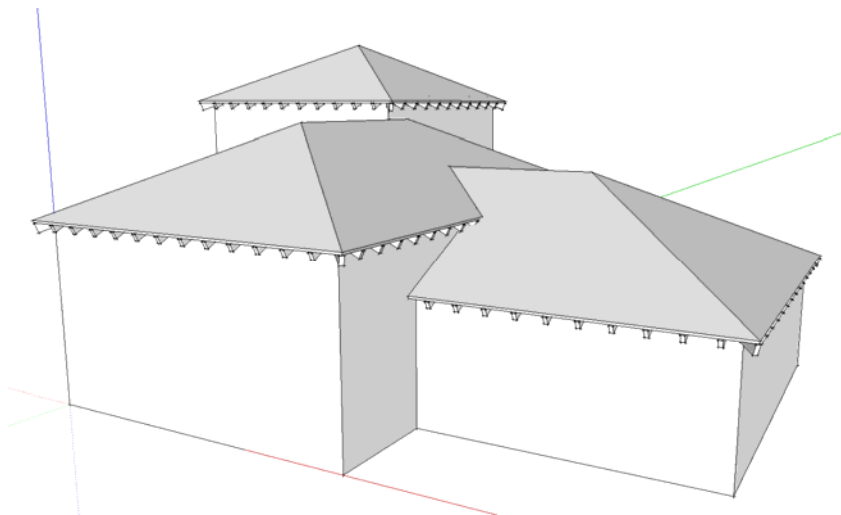
1. Draw a box or several attached boxes.
2. Select the top face or faces but don't select any edges.



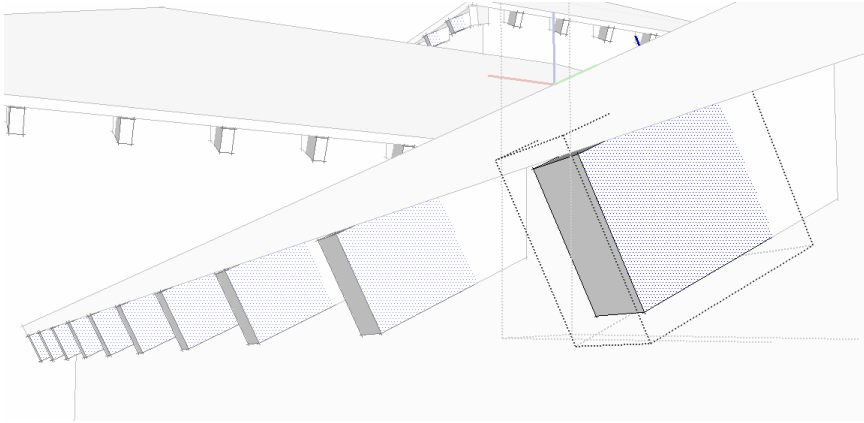
3. Choose “**Plugins / Instant Roof / Make Roof**”. In the pop-up menu, then choose “**Santa Barbara**” from the “**Roof Style?**” pull down menu.



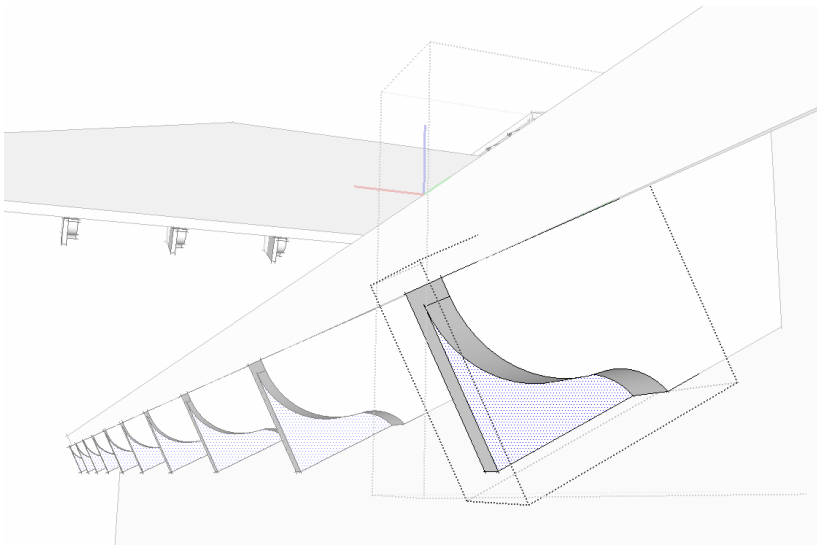
4. Choose “**OK**” to accept default parameters and generate the roof. The script should draw something like this:



5. Zoom into any rafter tail and double-click it. Then double click the end to open the component for editing.



6. Modify the end component. Here I drew a couple of arcs on the side and used the PushPull tool to cut off the end.



7. All the rafters now have this end detail. In a similar way, I edited the component on the end of one of the hip beams. This updated all of the hips.

