

Instant Subscription Script *Installation*

This demonstration details installation of Instant Wall, but the method is the same for other subscription scripts except that the names are different. (Eg. InstantTerrain.rb and InstantTerrainFiles.zip instead of InstantWall.rb and InstantWallFiles.zip respectively.)

Windows installation is shown here, however it is identical for Macintosh

The download files are located under the "Files" tab on your account.

*If you have purchased a subscription after 03/2014 you will find a single .rbz installation file. If so install according to **RBZ Installation**. If you purchased previously, install according to **ZIP Installation**.*

RBZ Installation

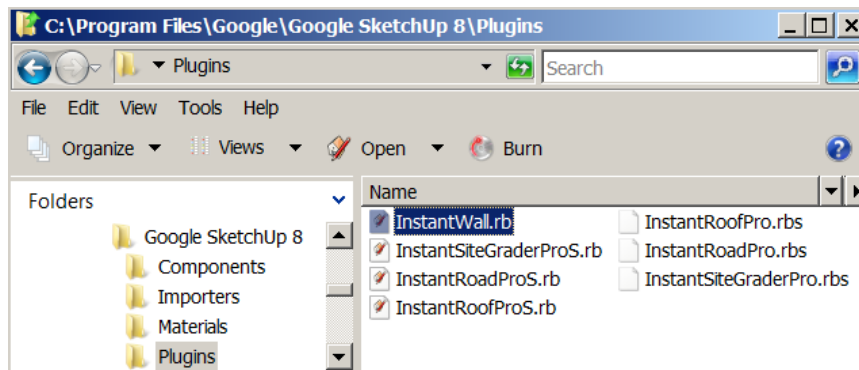
To install a SketchUp Ruby plugin script with the .rbz format: We recommend logging into your computer as an admin before installing any Ruby scripts. This will make the installation go more smoothly and ensure that files get installed in the proper places.

- 1) Select **Window > Preferences** (Microsoft Windows) or **SketchUp > Preferences** (Mac OS X). The Preferences dialog box is displayed.
- 2) Click on **Extensions**. The Extensions panel is displayed.
- 3) Click on the **Install Extension** button. The Open dialog box is displayed.
- 4) Locate the Ruby archive file to install (.rbz).
- 5) Click on the **Open** button. The Ruby plugin appears in the list of extensions.
- 6) Close and restart SketchUp

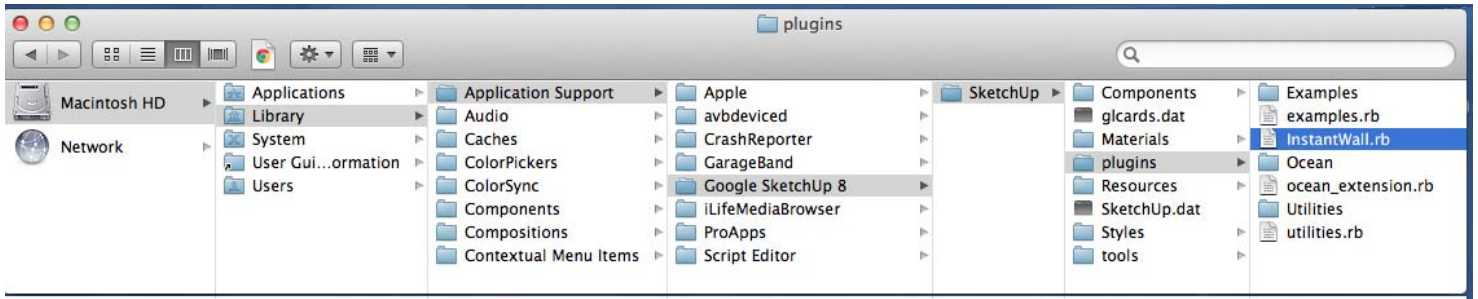
ZIP Installation

1. Download both files: InstantWall.rb and InstantWallFiles.zip.
2. Copy InstantWall.rb to your "Plugins" folder.

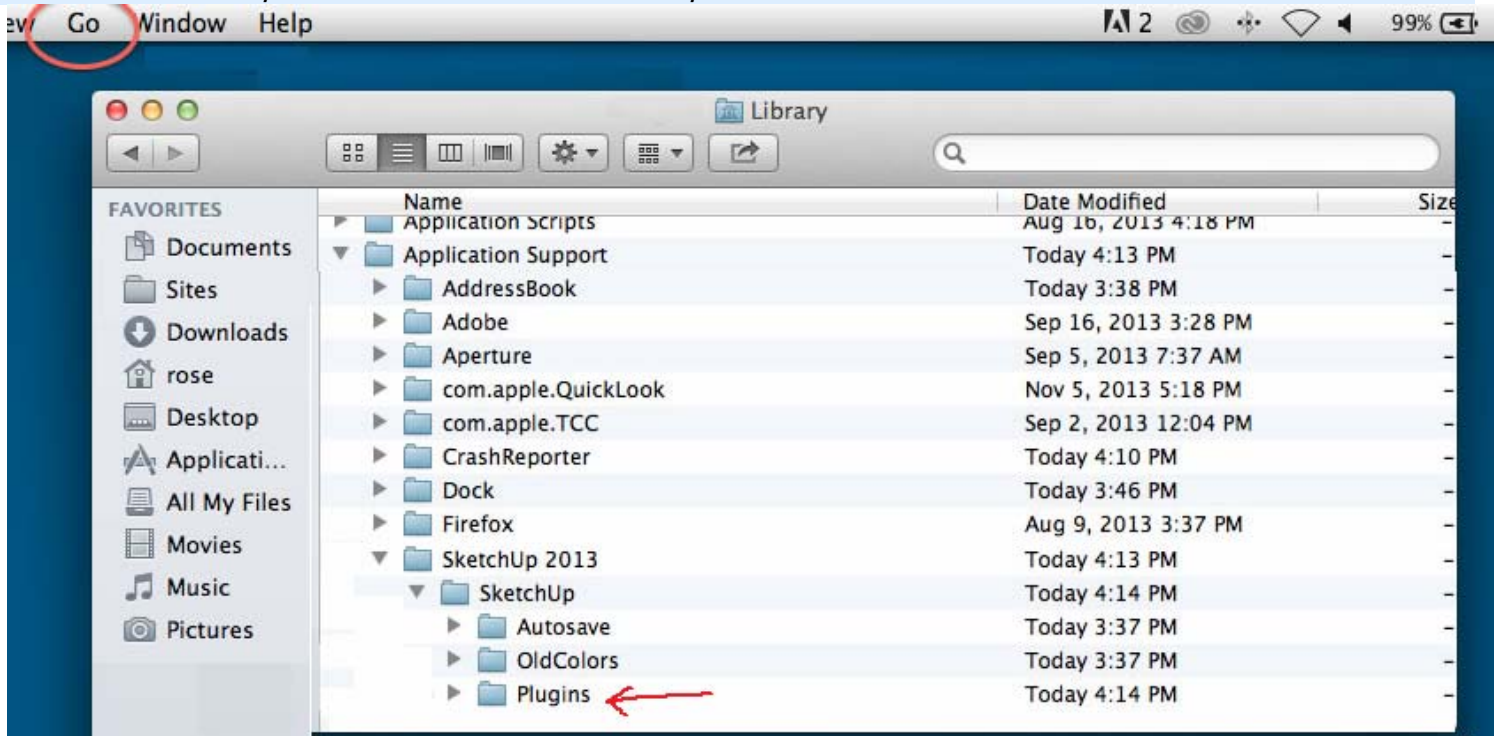
On a typical Windows platform, the path is **C:\Program Files\Google\Google SketchUp 8\Plugins**)



On a typical Mac platform, the path is *Macintosh HD/Library/Application Support/Google SketchUp 8/SketchUp/plugins*)

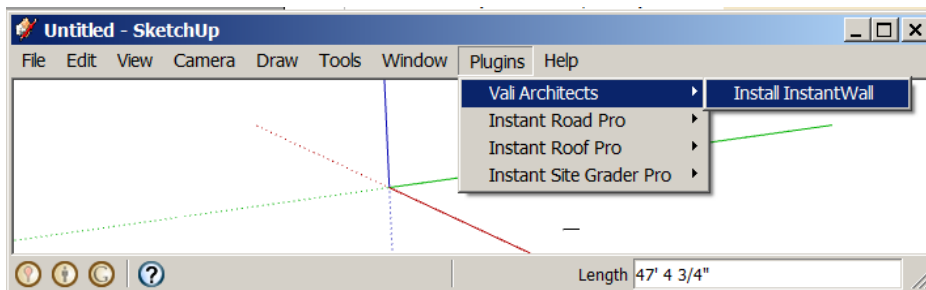


With SU2013 under Mac OS 10.8, I found the "Plugins" folder as follows: open Finder window then click on the GO menu, hold down the option key and click on the Library folder, then navigate to Application Support/ SketchUp 2013/SketchUp/Plugins. If you still can not find your "Plugins" folder on the MAC, please consult online Sketchup and Mac resources.

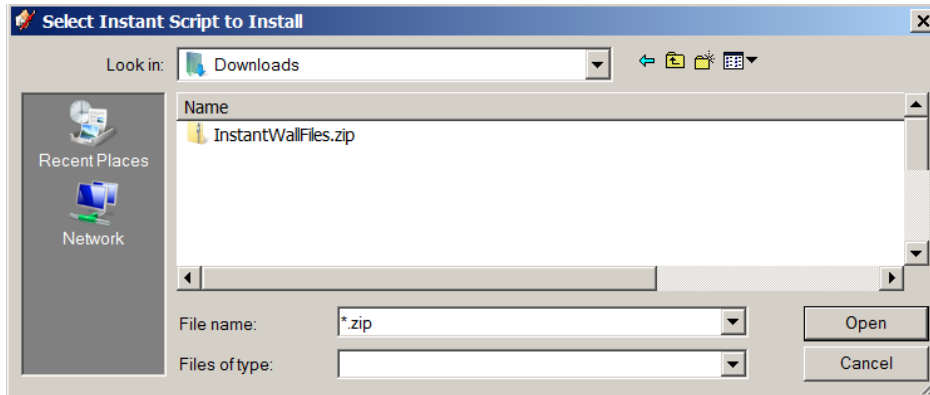


If you are using Su7 or earlier on a Windows platform, skip steps 3,4 and 5. Instead, right click the downloaded file "InstantWallFiles.zip" and extract the contents to your plugins folder.

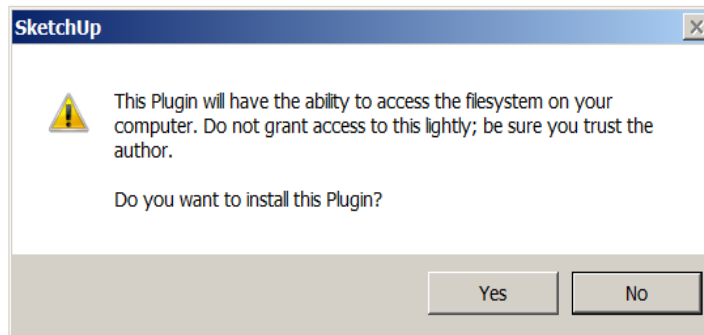
3. Start Sketchup. From the 'Plugins" menu, select Vali Architects/Install InstantWall.



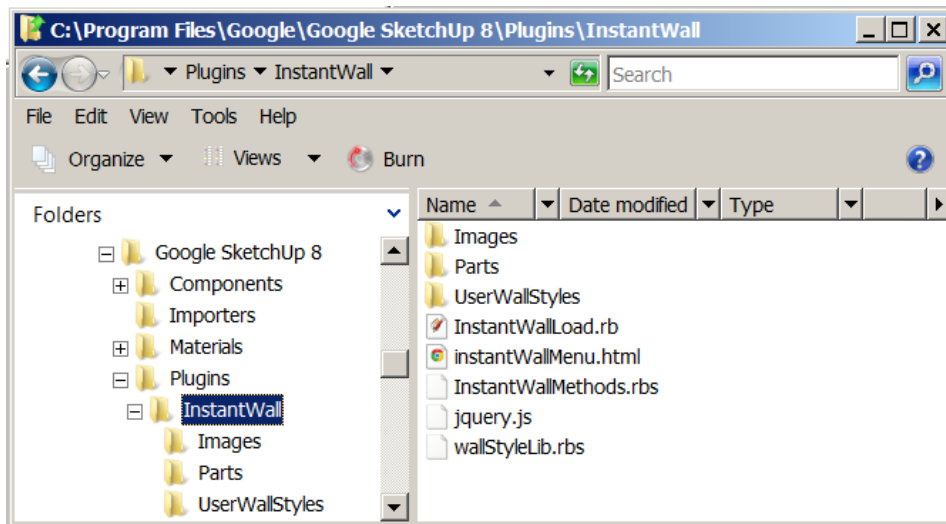
4. Navigate to your downloads location and select 'InstantWallFiles.zip' and click "Open"



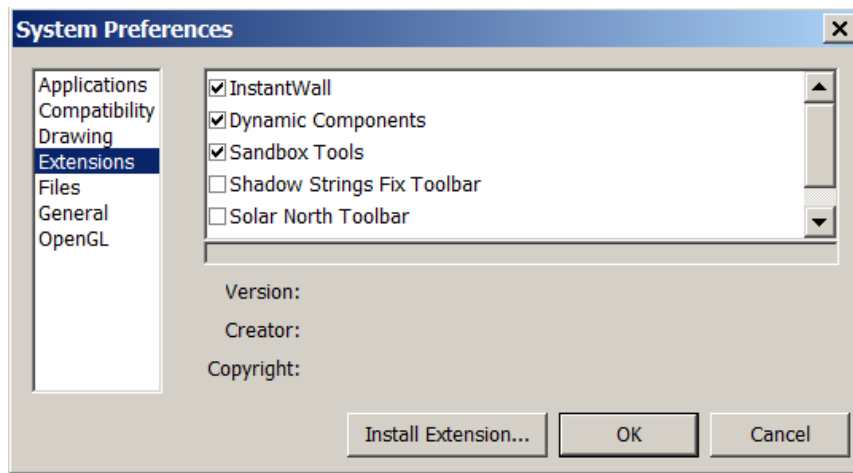
5. Click "Yes" to install the Plugin.



The folder /InstantWall will be created in your Plugins folder.



6. Close and restart SketchUp. The script can be turned on or off under Preferences/Extensions.



To run the script, from the 'Plugins" menu, select Vali Architects/InstantWall.