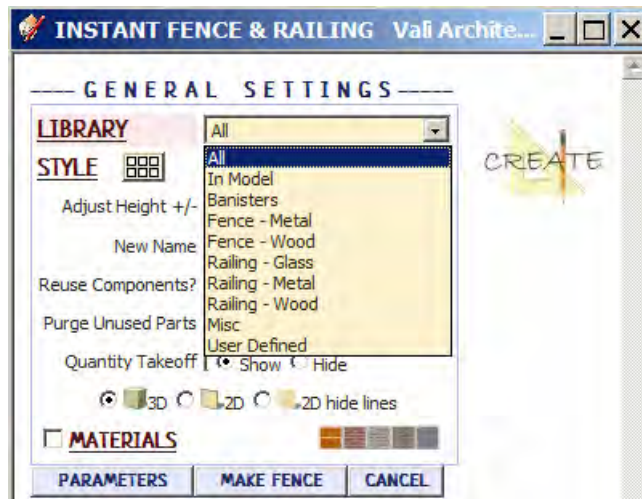


# Instant Fence and Railing Styles

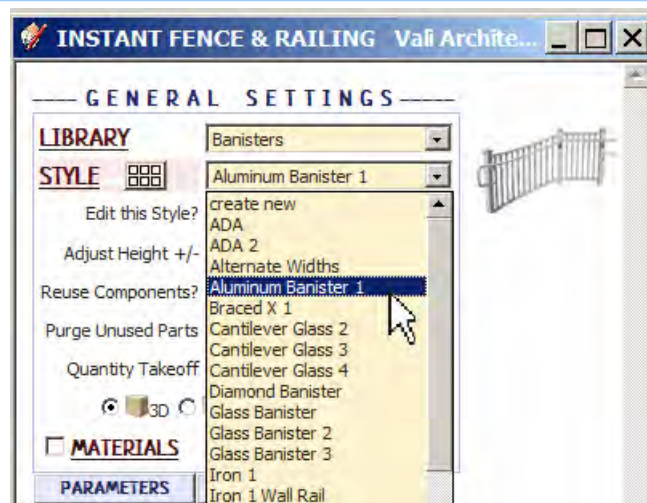
*With Preset Fence and Railing Styles, the script can be used without the need to learn parameter settings*

- Styles are saved sets of parameters.
- Libraries are groups of Styles.
- When a style is used in a model, it is entered into the "In Model" style library and saved with the file.
- New styles are easily created by saving a modification to an existing style.

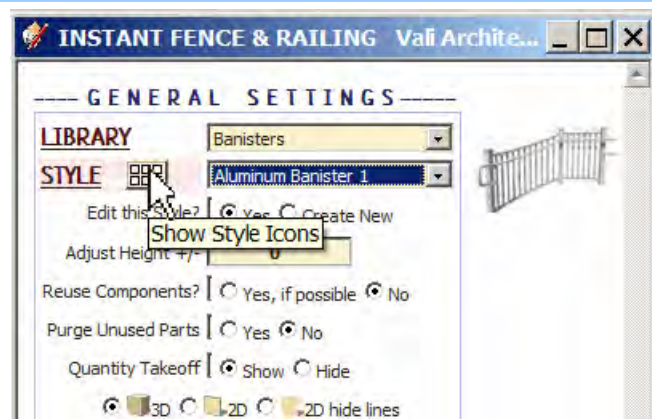
**Style Libraries** There are 7 libraries. They are displayed in the "LIBRARY" drop down list.



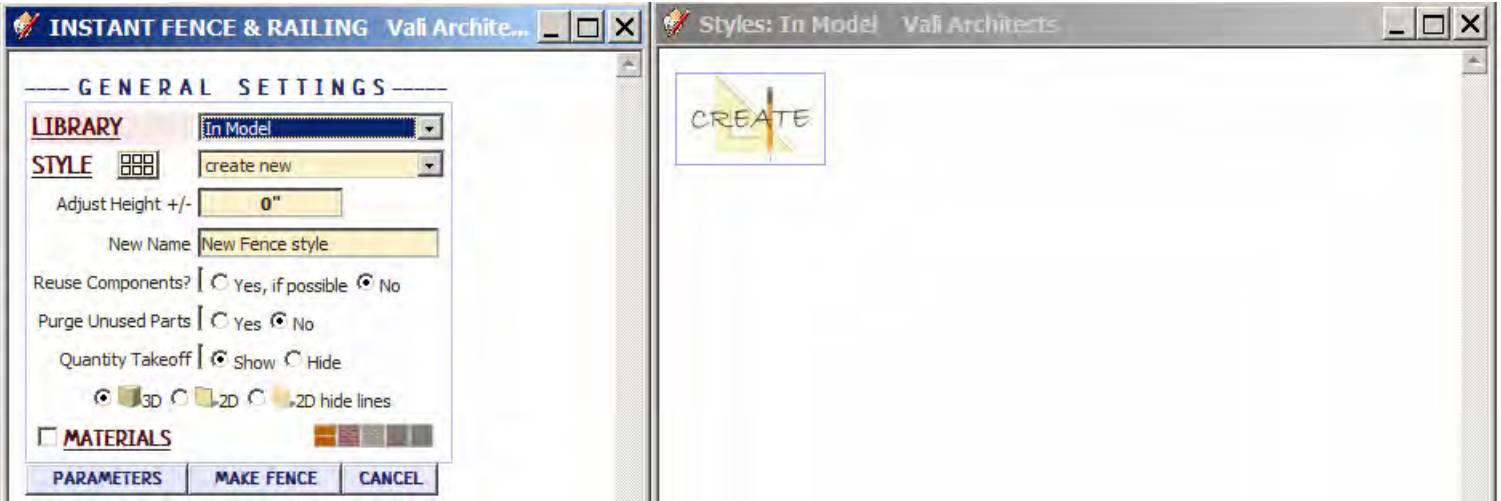
**Styles** A style is chosen from the 'STYLE' pull down list for the selected library.



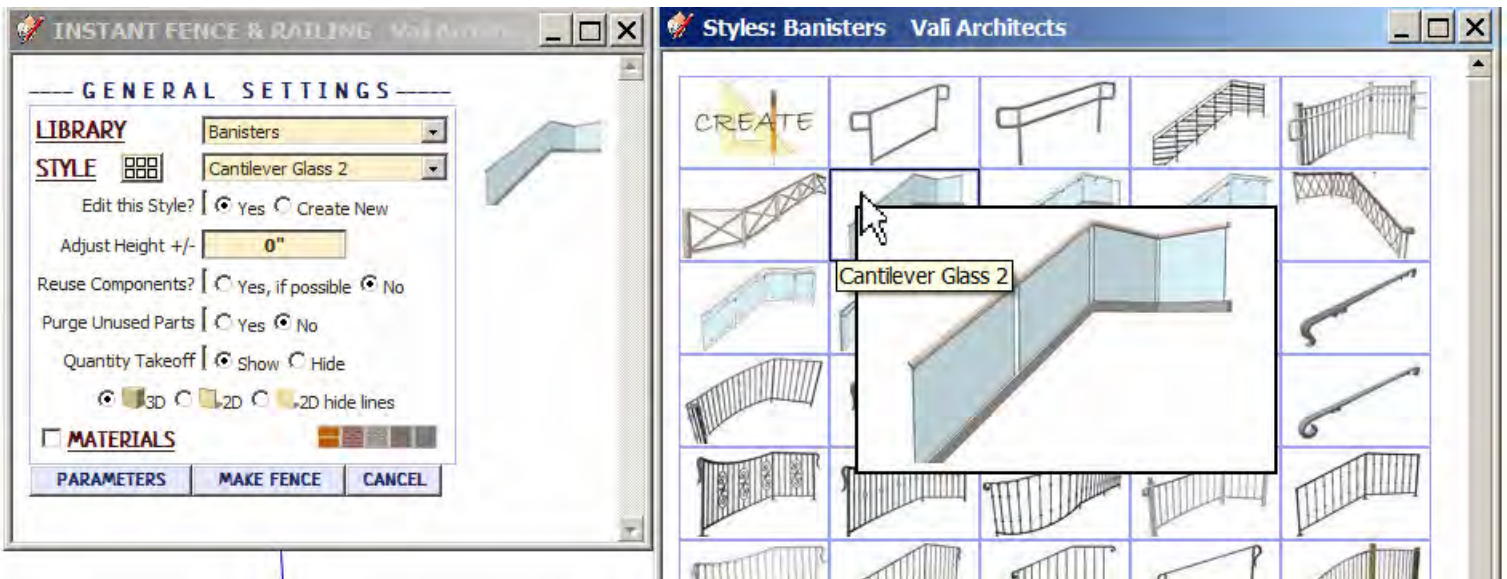
**Style Icon Menu** Styles can also be chosen from an image menu by clicking.



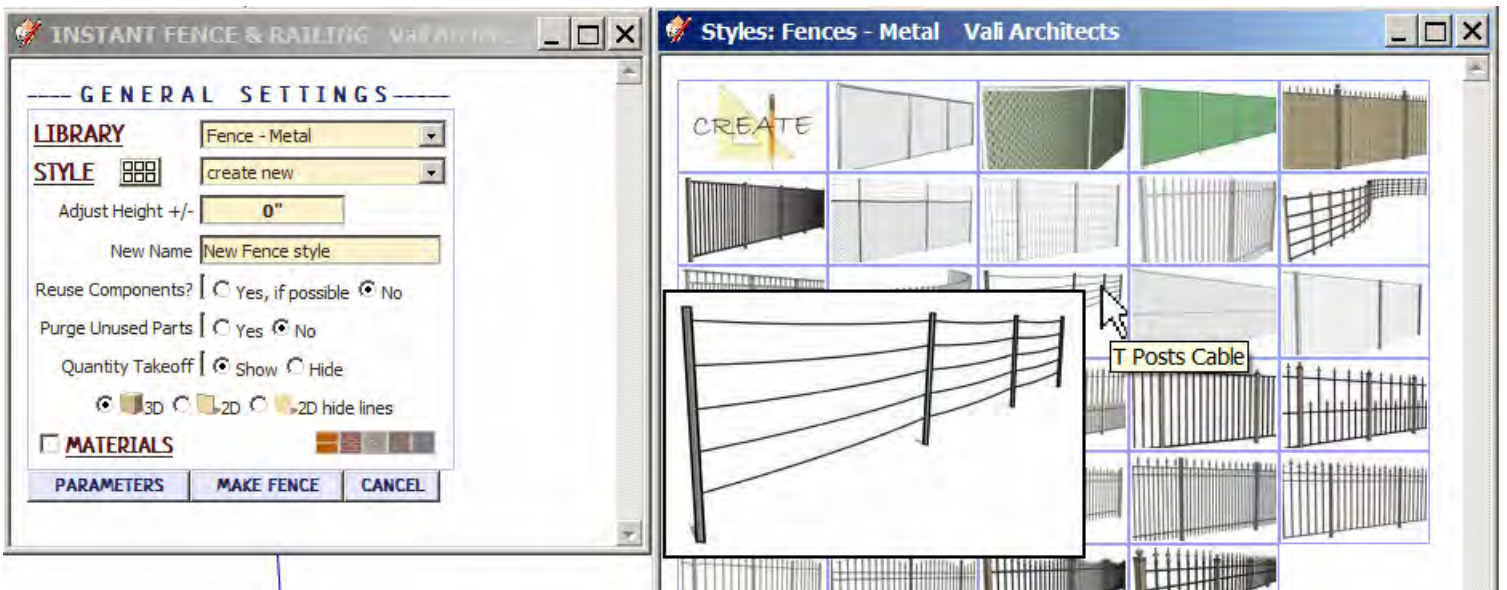
**In Model library** - Displays styles that are used in the model. It's empty because I haven't created a fence or railing in this model yet.



**Banisters library.** Rolling over an image will display an enlarged image and the style name.

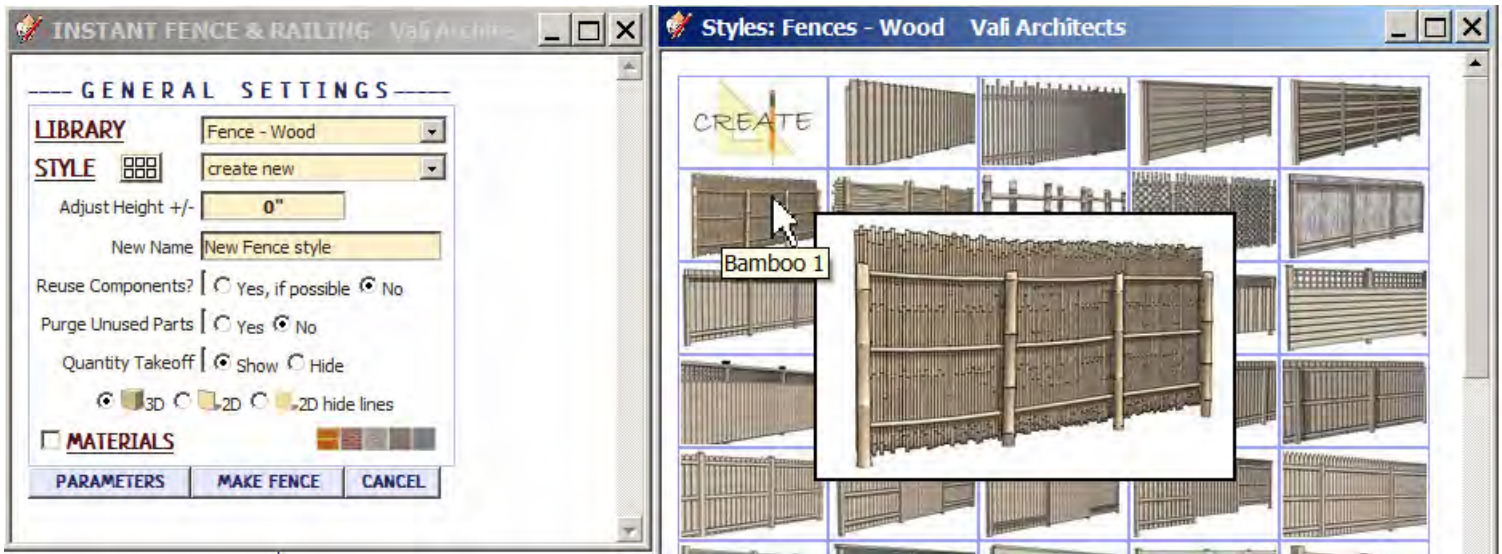


**Fence - Metal library**

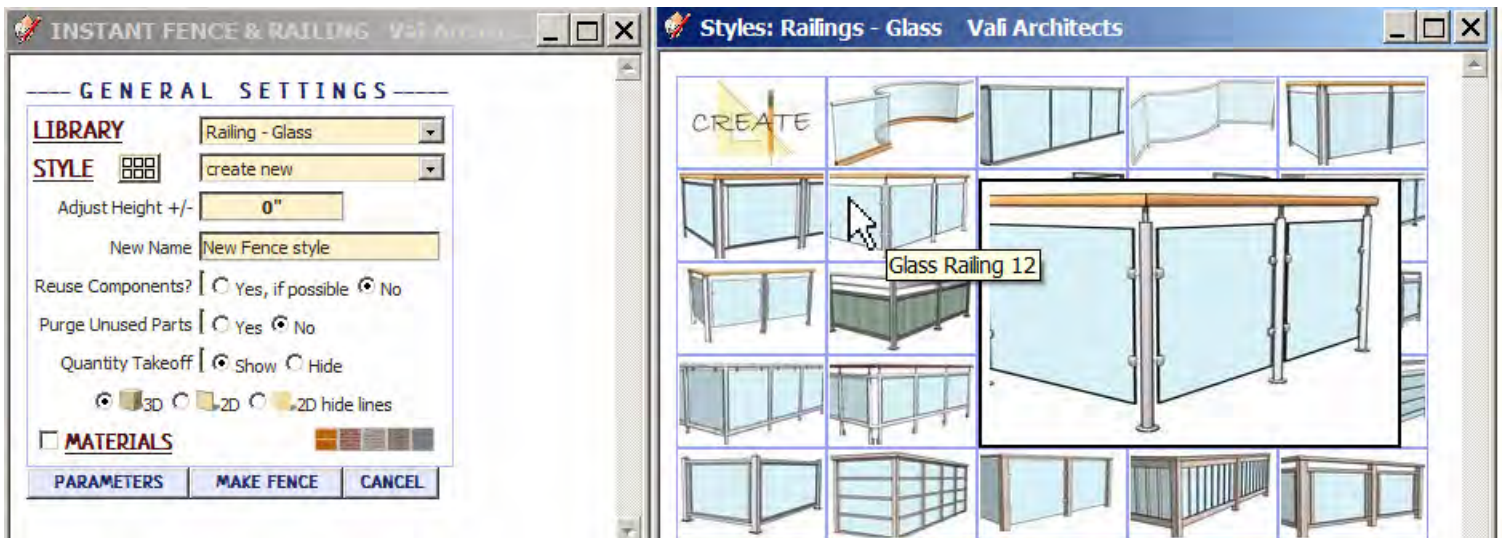




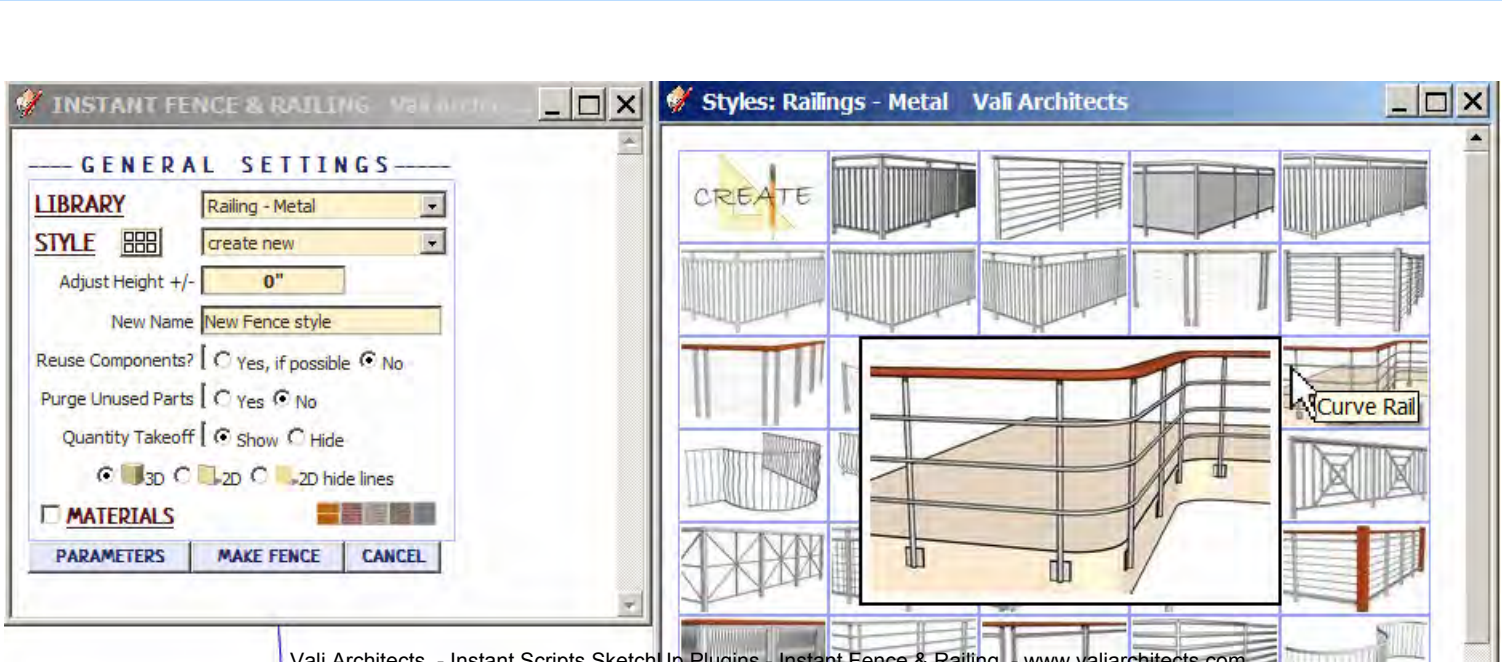
## Fence - Wood *library*



## Railing - Glass *library*

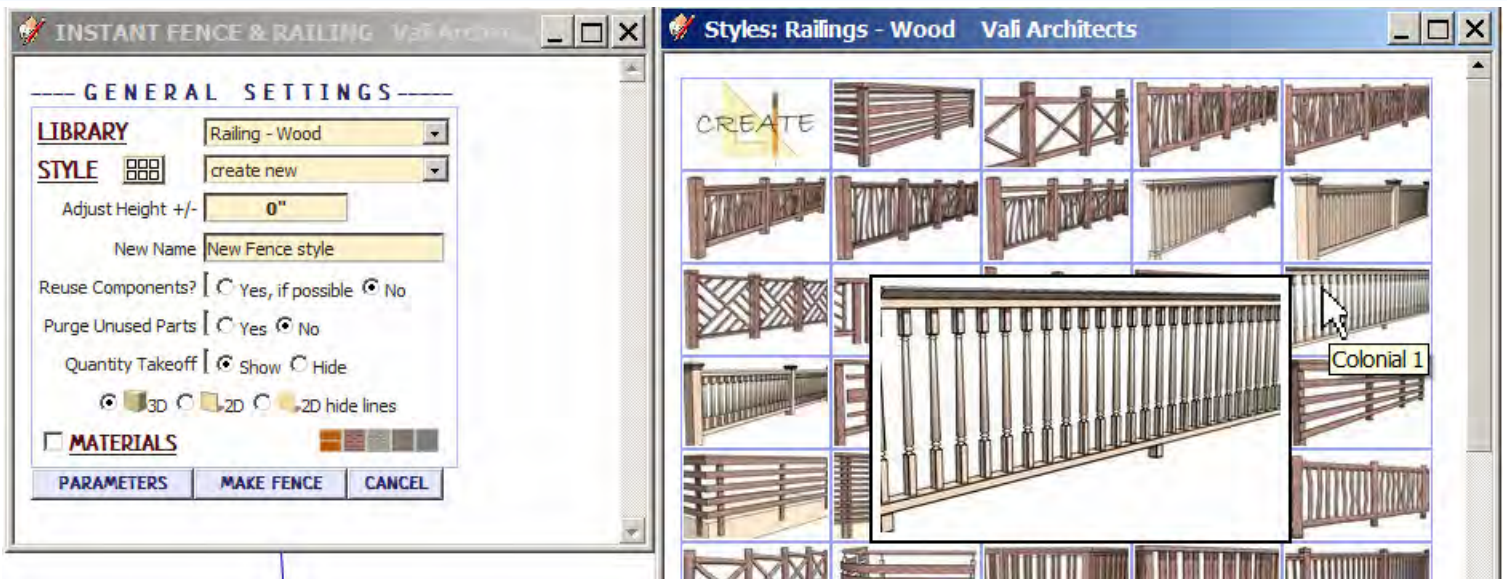


## Railing - Metal *library*

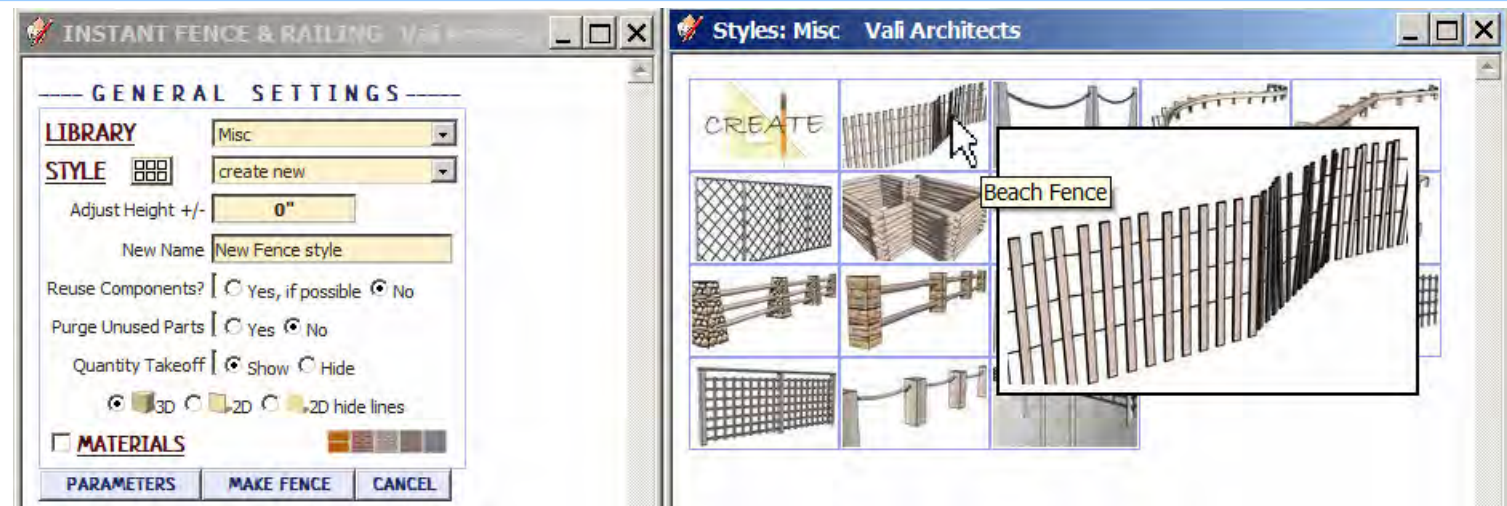




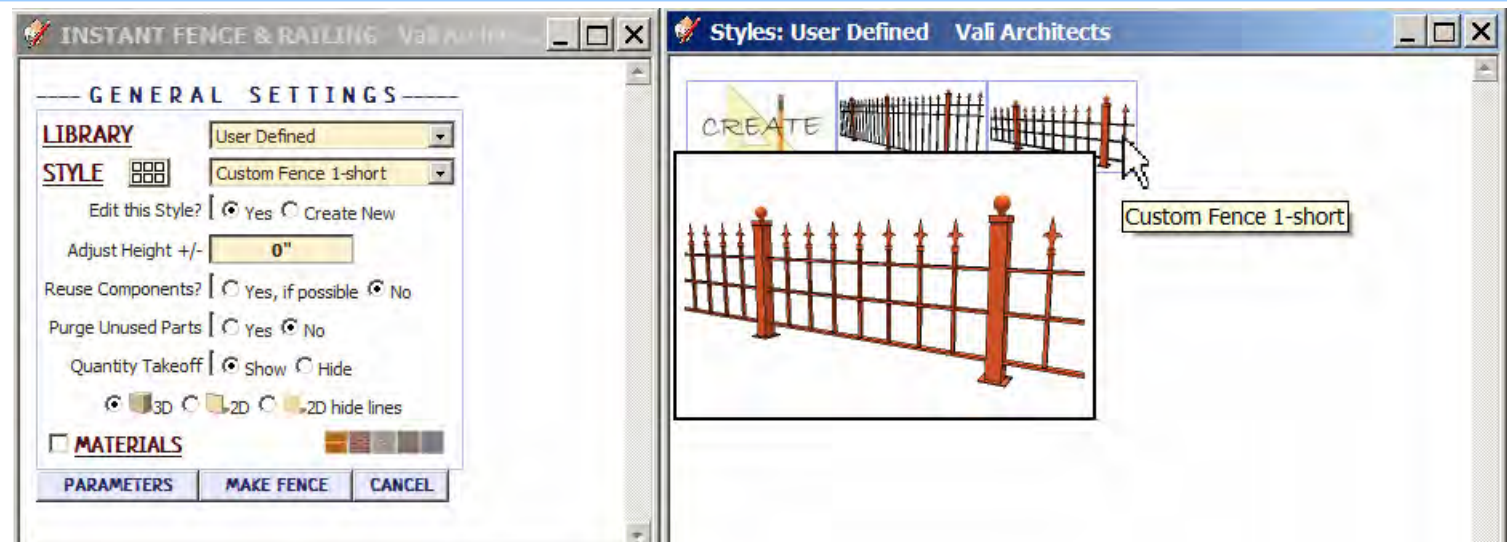
## Railing - Wood *library*



## Misc *library*

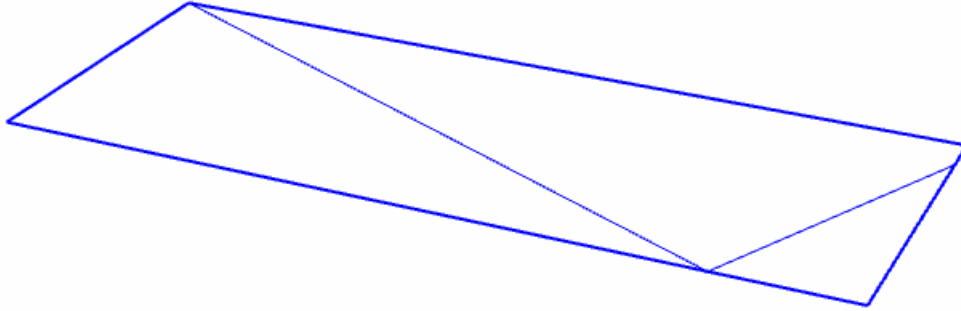


## User Defined *library* - Thumbnails and enlarged images are also displayed for user created styles.

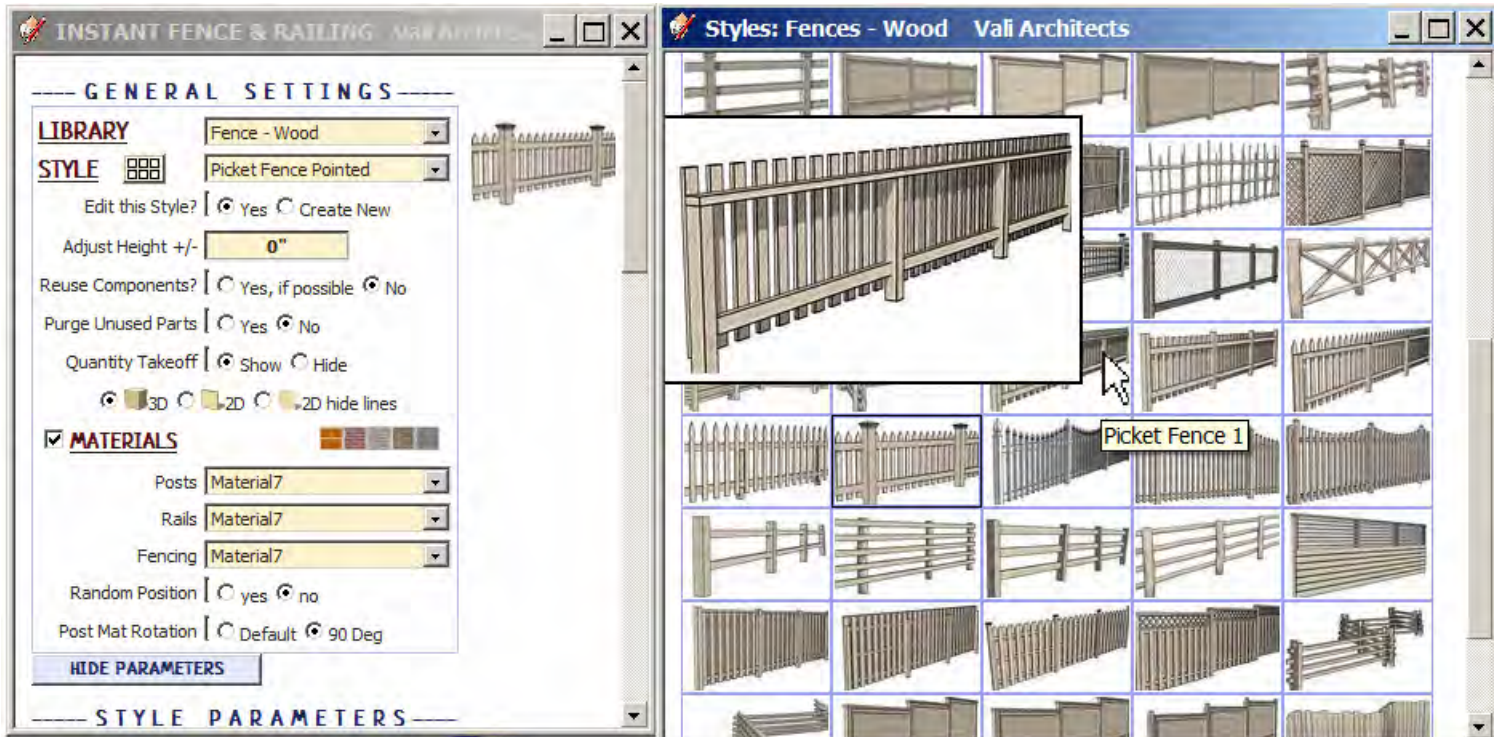


## Create New Style *Example*

1. I made a group enclosing a center line for a Fence.



2. Selected the preset style "Picket Fence 1".



3. Edited a single parameter -changing from Gothic pickets to Pyramid Top pickets

