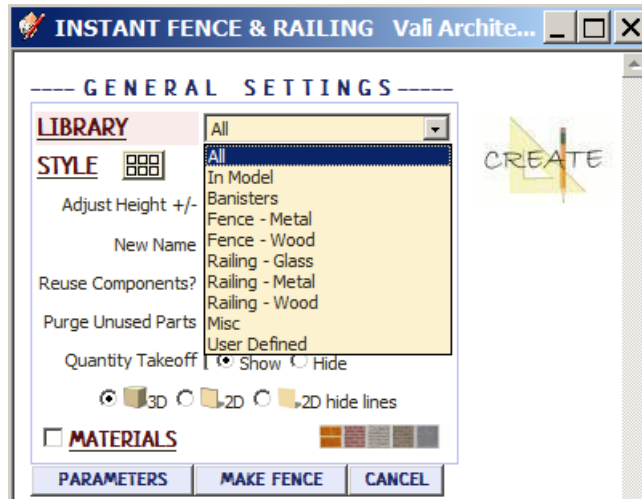


Instant Fence and Railing Styles

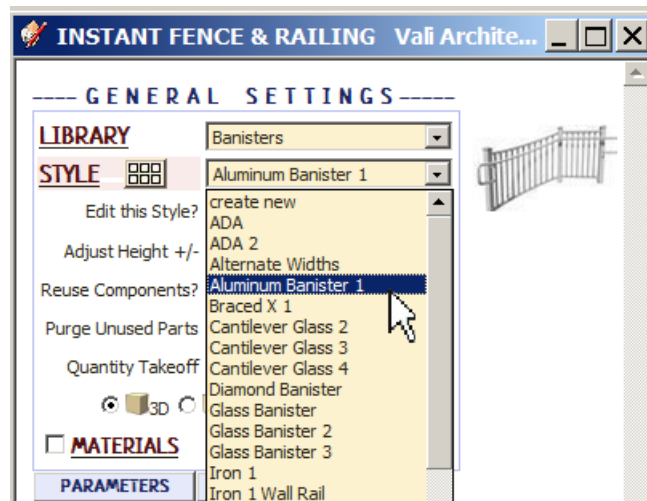
With Preset Fence and Railing Styles, the script can be used without the need to learn parameter settings

- Styles are saved sets of parameters.
- Libraries are groups of Styles.
- When a style is used in a model, it is entered into the "In Model" style library and saved with the file.
- New styles are easily created by saving a modification to an existing style.

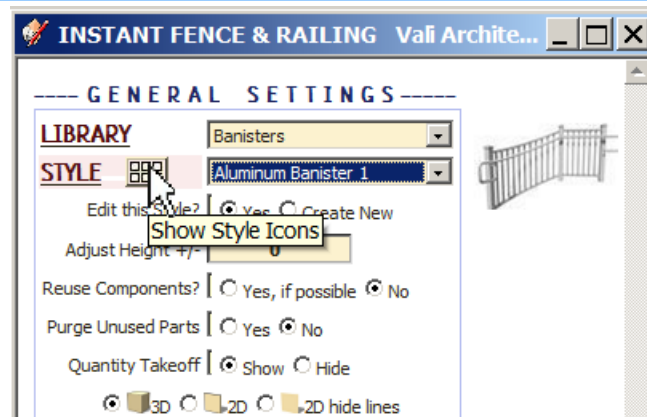
Style Libraries There are 7 libraries. They are displayed in the "LIBRARY" drop down list.



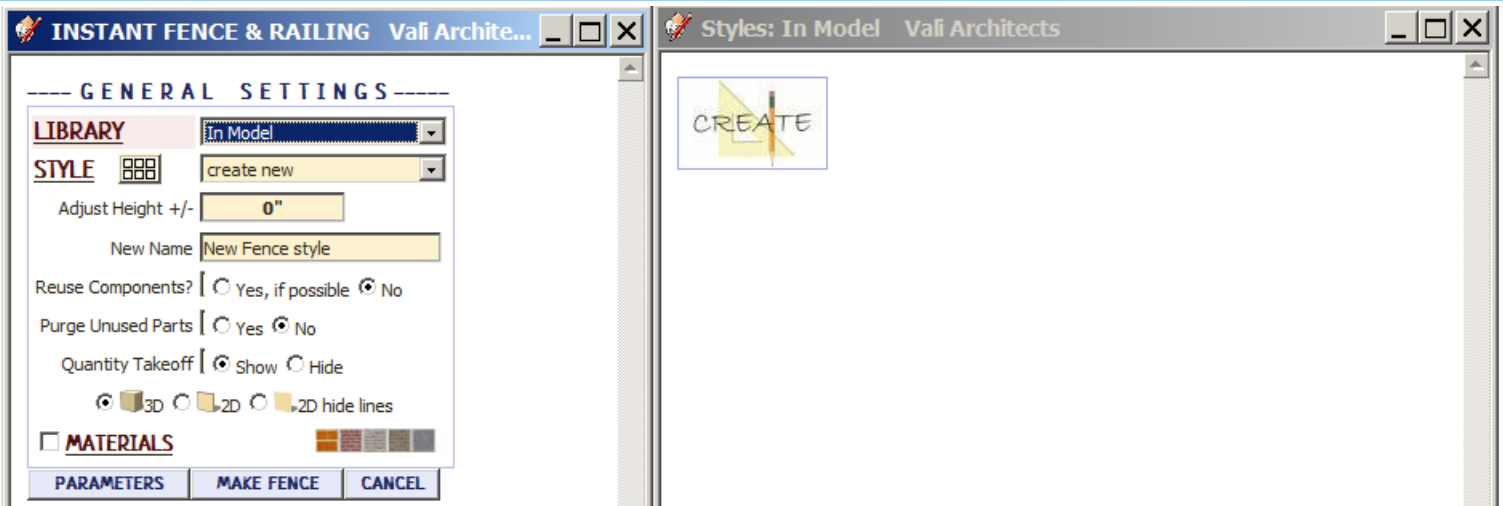
Styles A style is chosen from the 'STYLE' pull down list for the selected library.



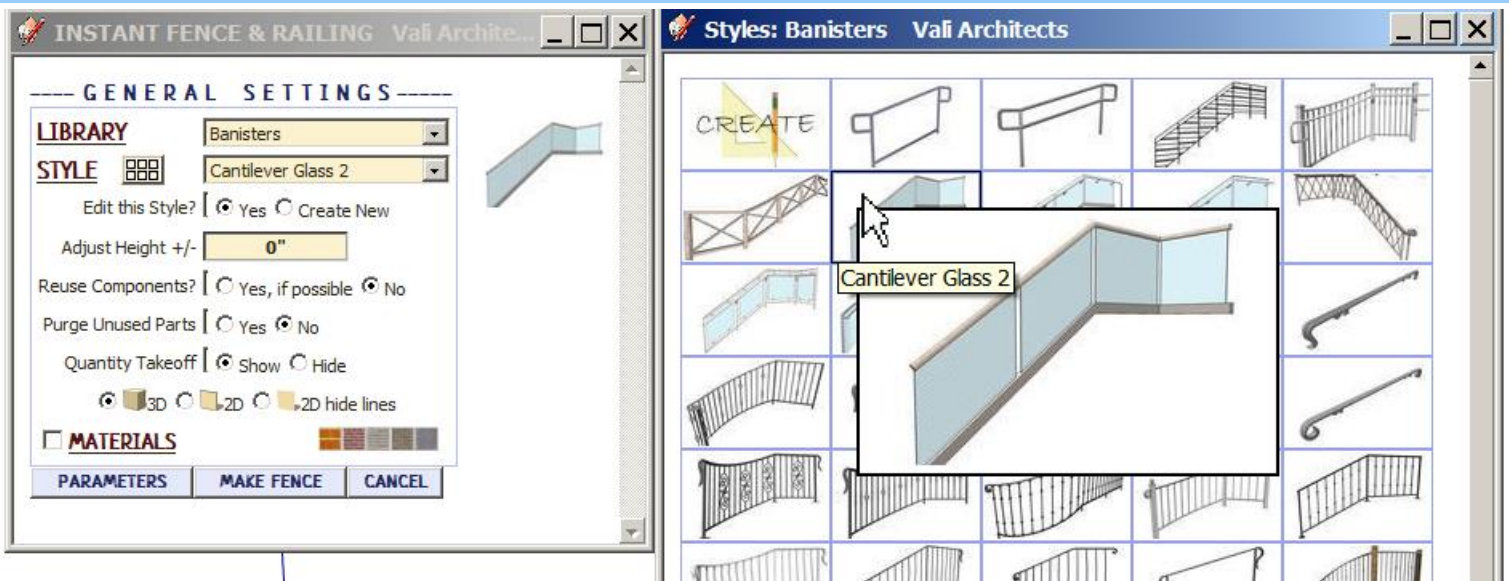
Style Icon Menu Styles can also be chosen from an image menu by clicking.



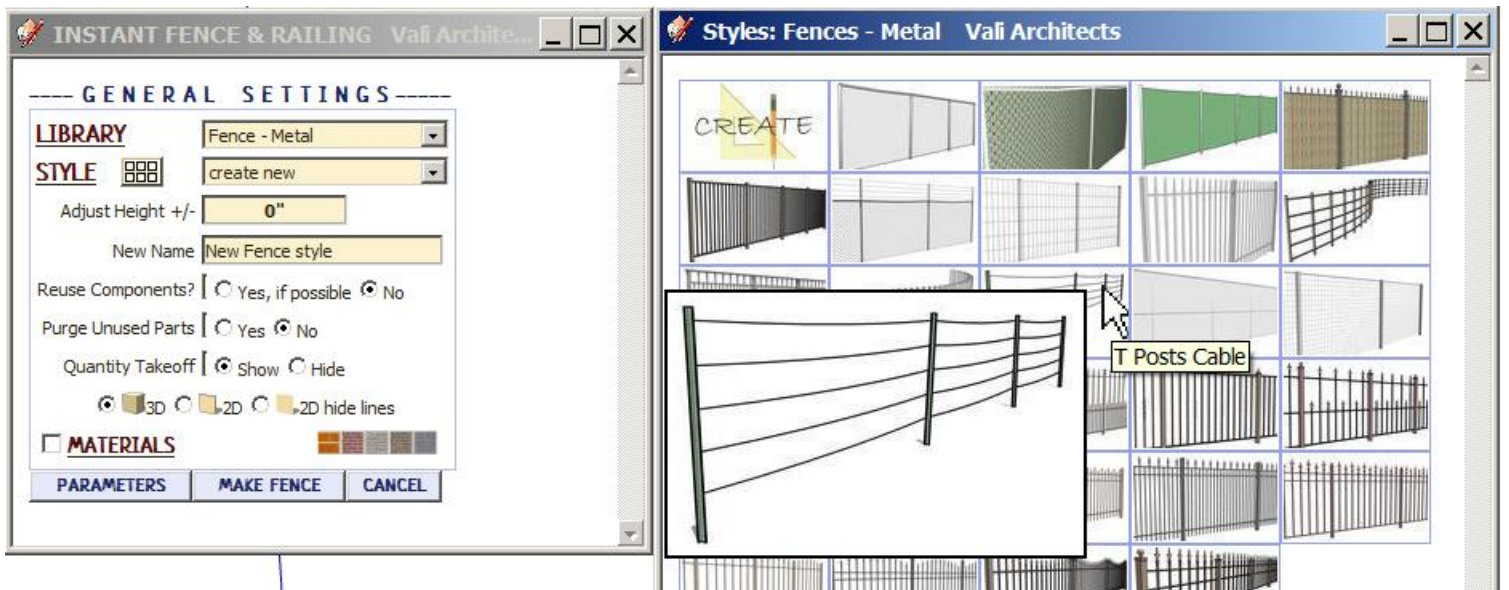
In Model library - Displays styles that are used in the model. It's empty because I haven't created a fence or railing in this model yet.



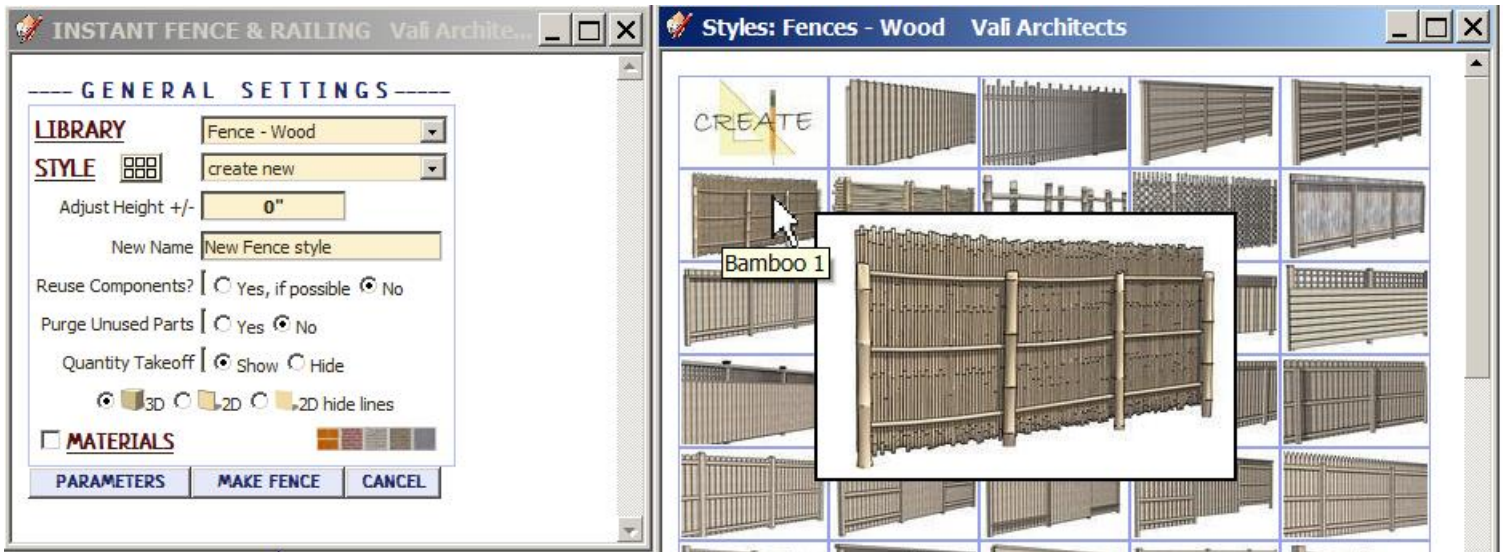
Banisters library. Rolling over an image will display an enlarged image and the style name.



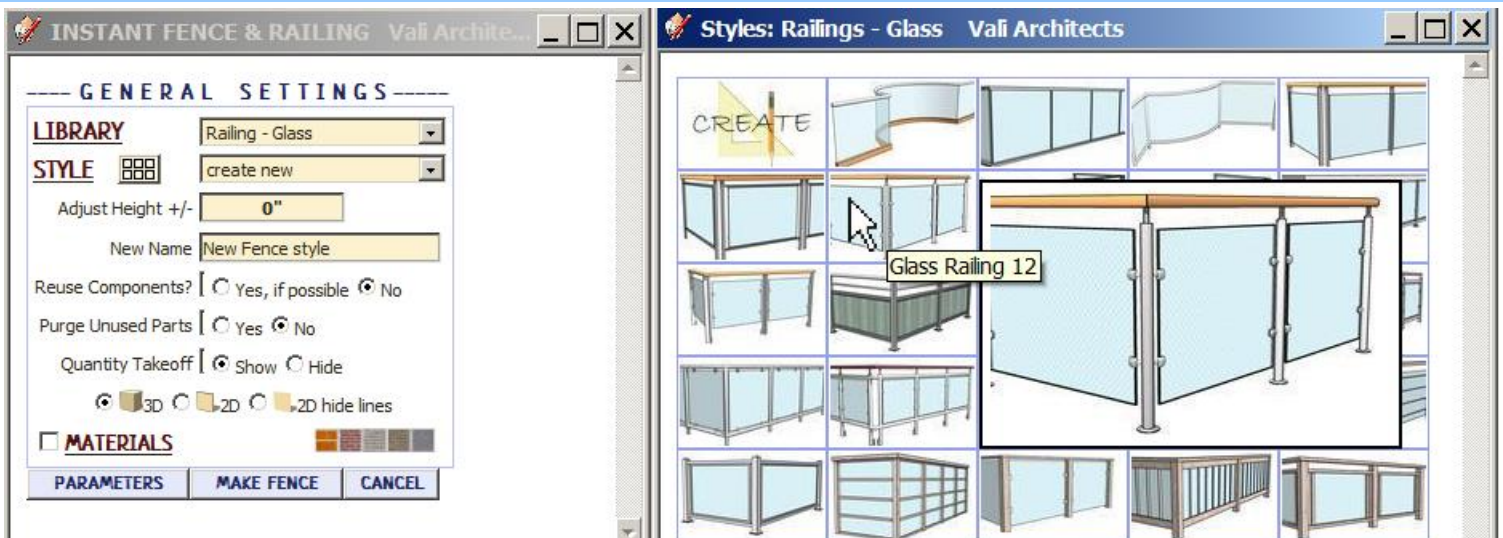
Fence - Metal library



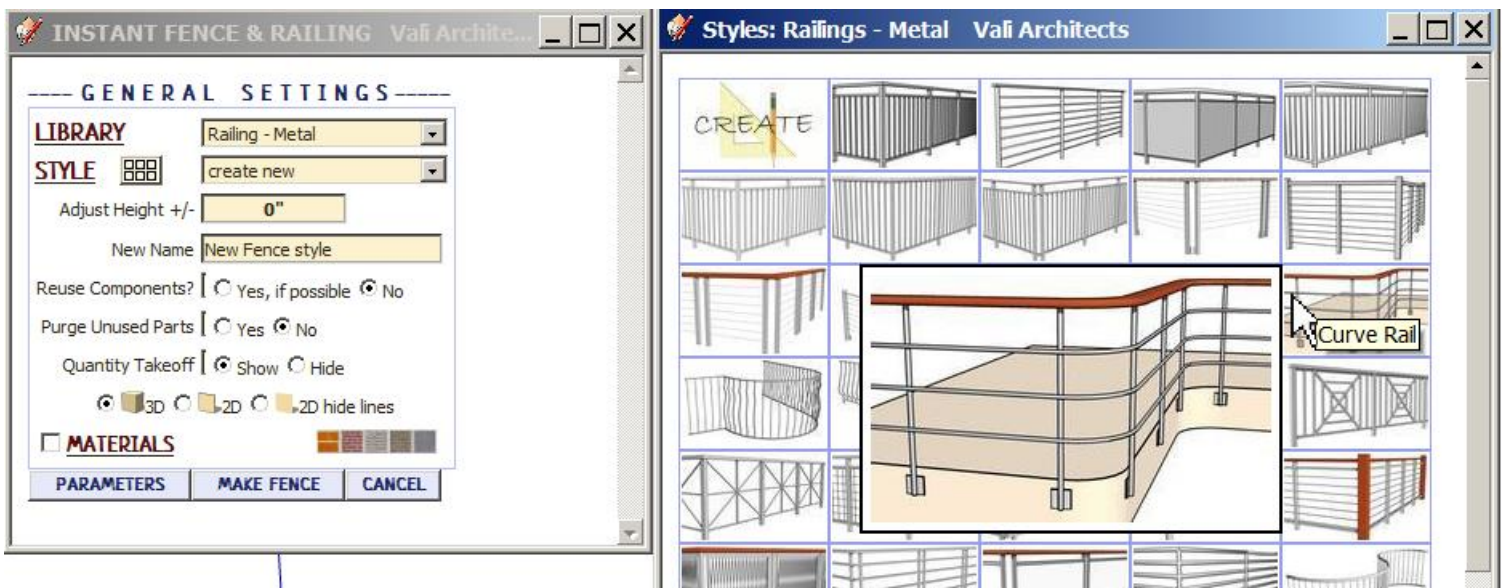
Fence - Wood library



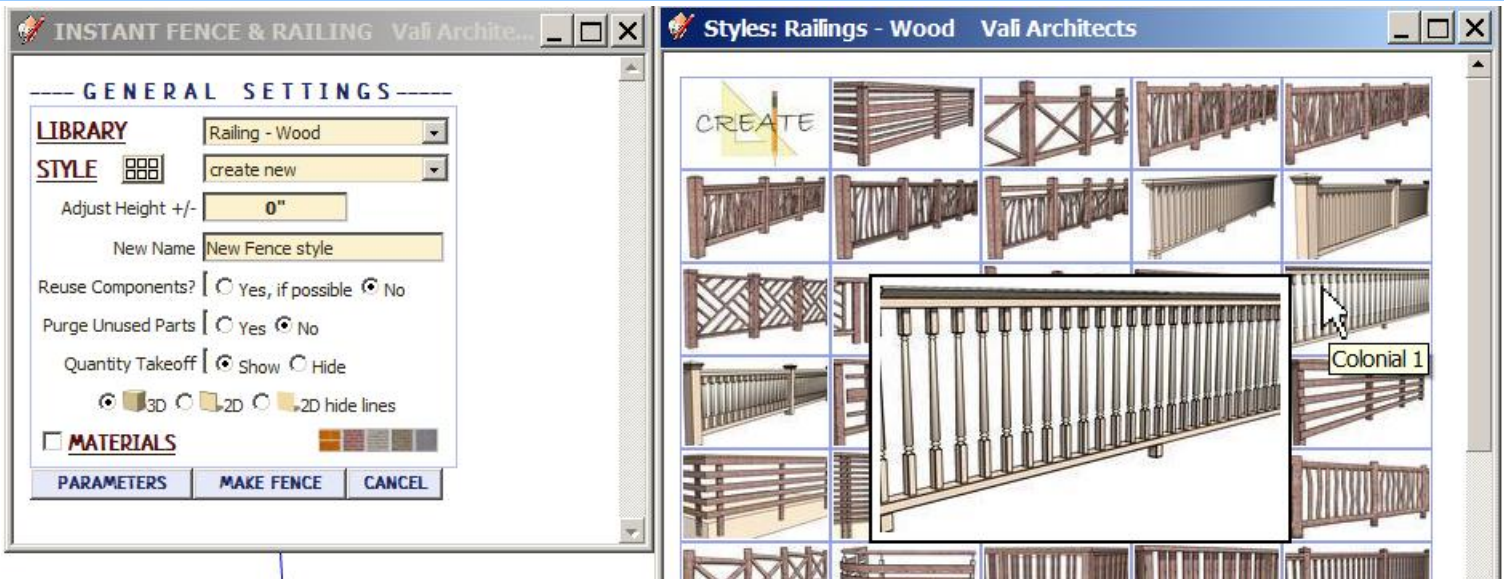
Railing - Glass library



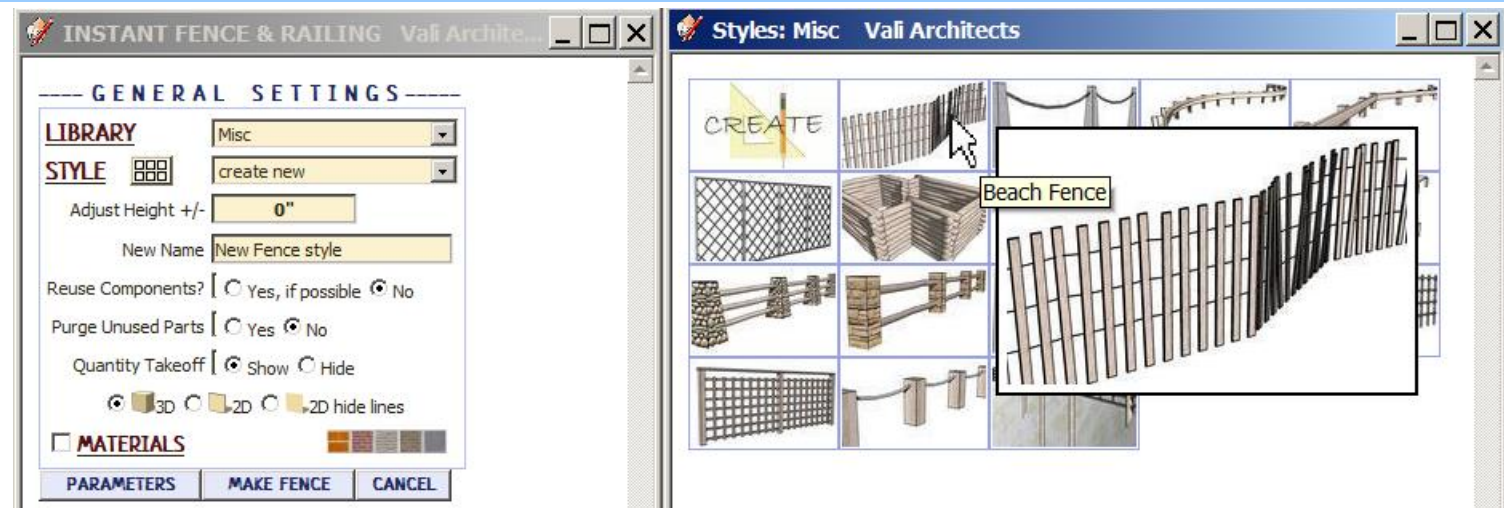
Railing - Metal library



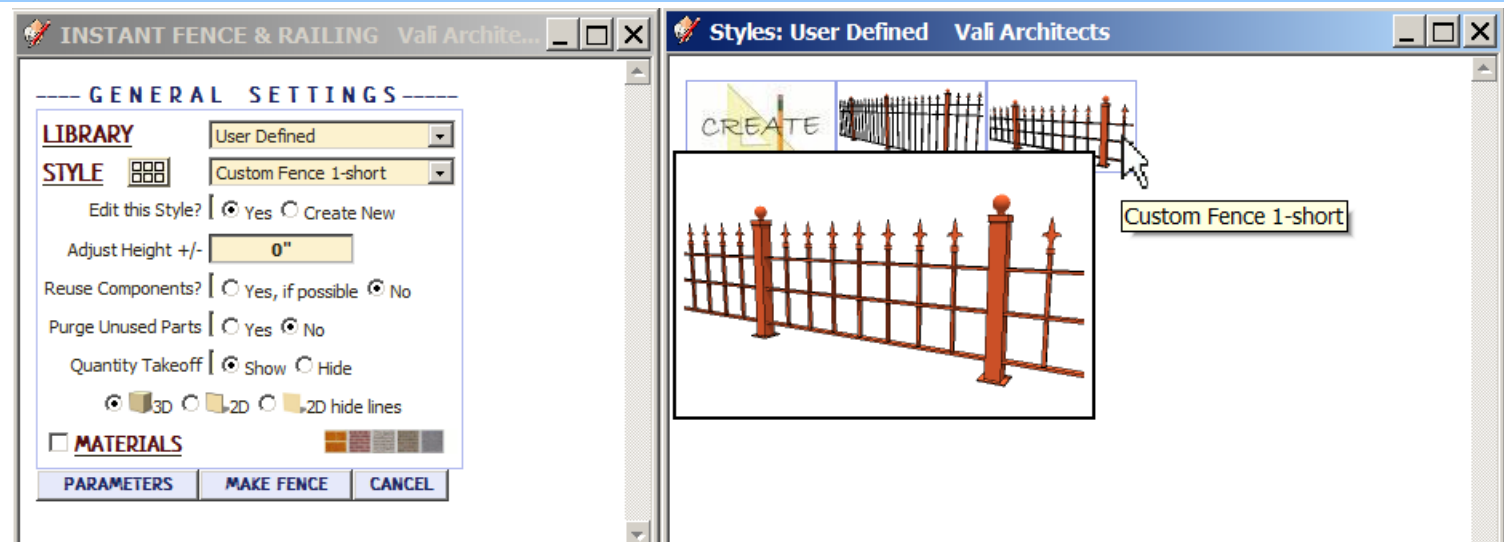
Railing - Wood library



Misc library

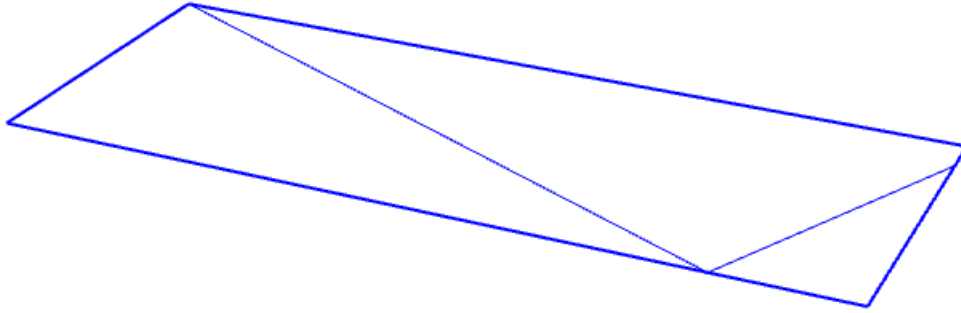


User Defined library - Thumbnails and enlarged images are also displayed for user created styles.

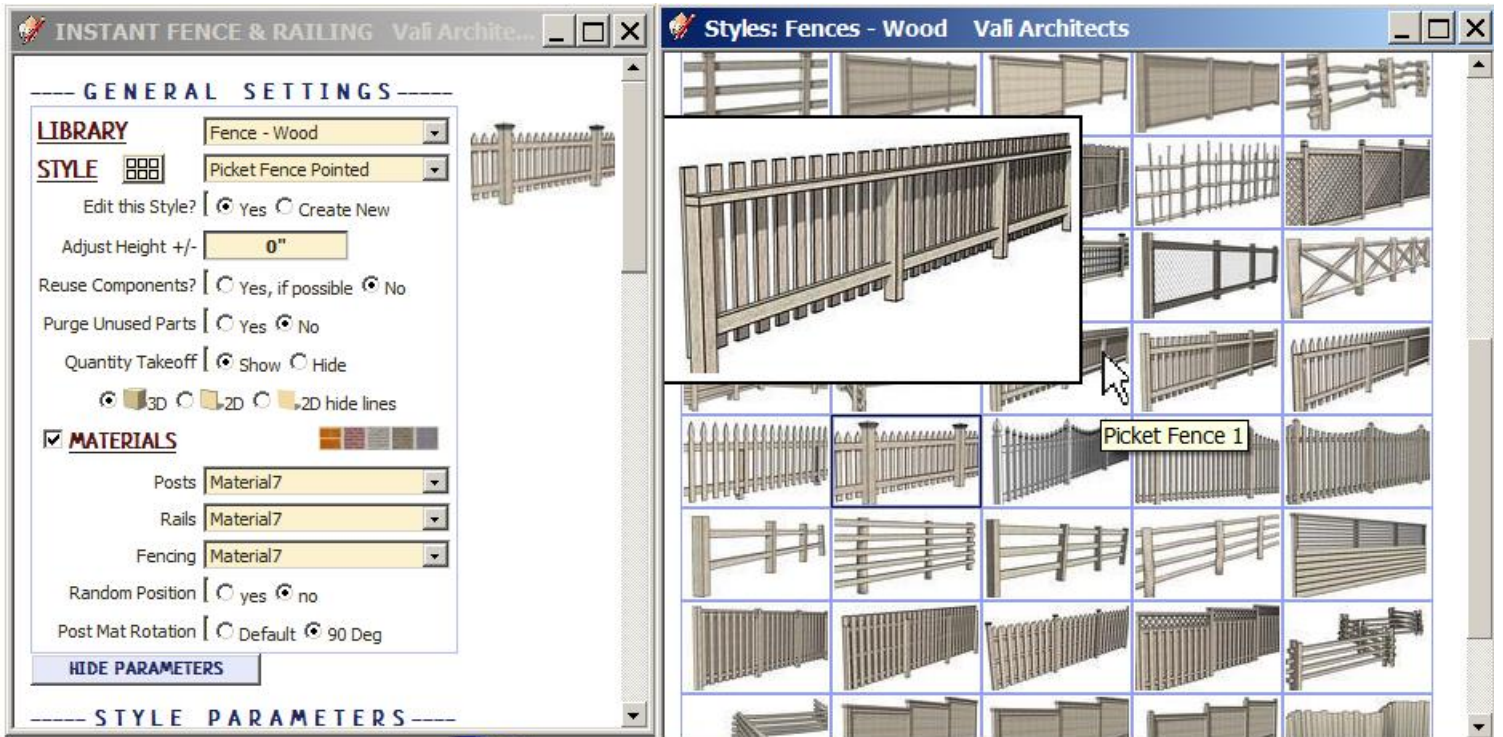


Create New Style *Example*

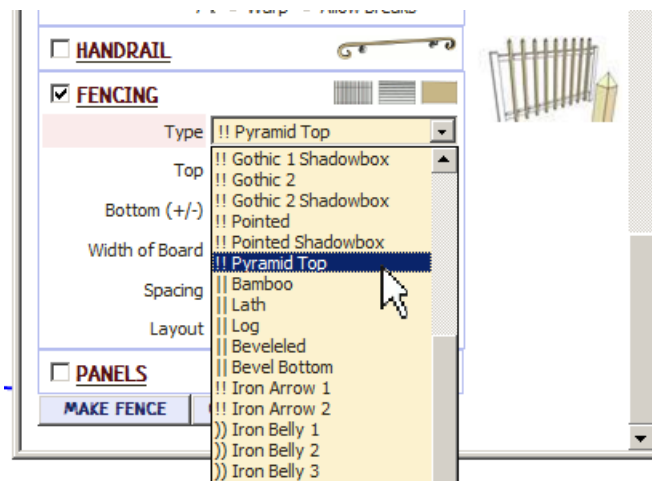
1. I made a group enclosing a center line for a Fence.



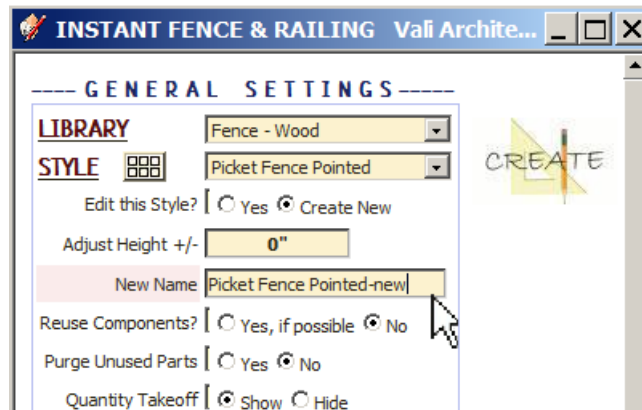
2. Selected the preset style "Picket Fence 1".



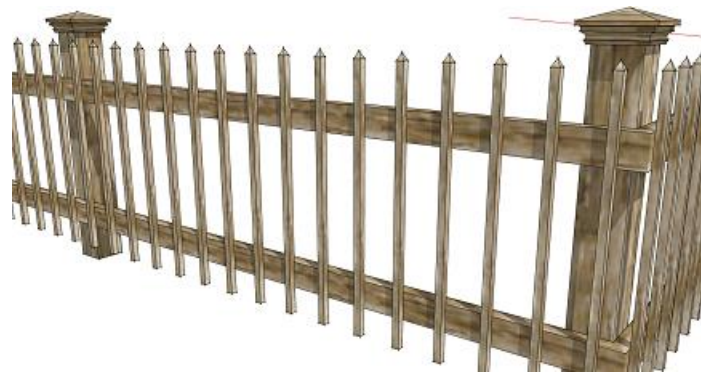
3. Edited a single parameter -changing from Gothic pickets to Pyramid Top pickets



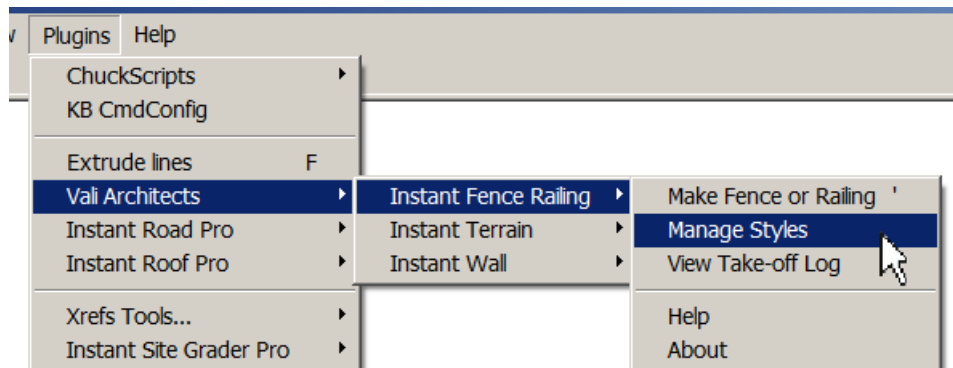
4. Created a new style named "Picket Fence Pointed -new".



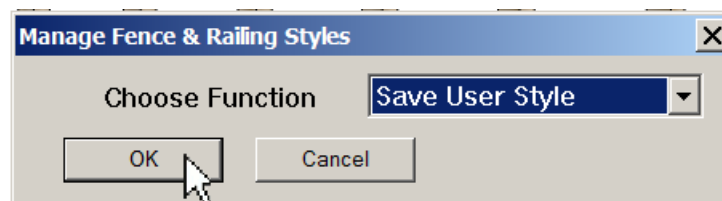
4. Created the fence and zoomed/panned to the view I want to use for the new style icon.



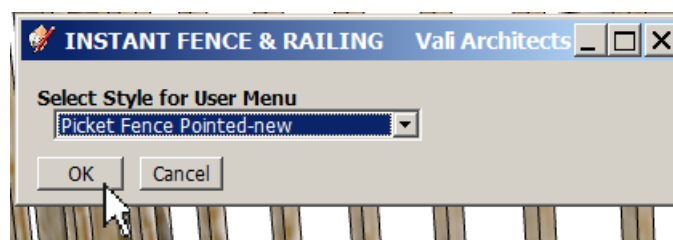
5. Selected "Manage Styles" from the Instant Fence Railing menu.



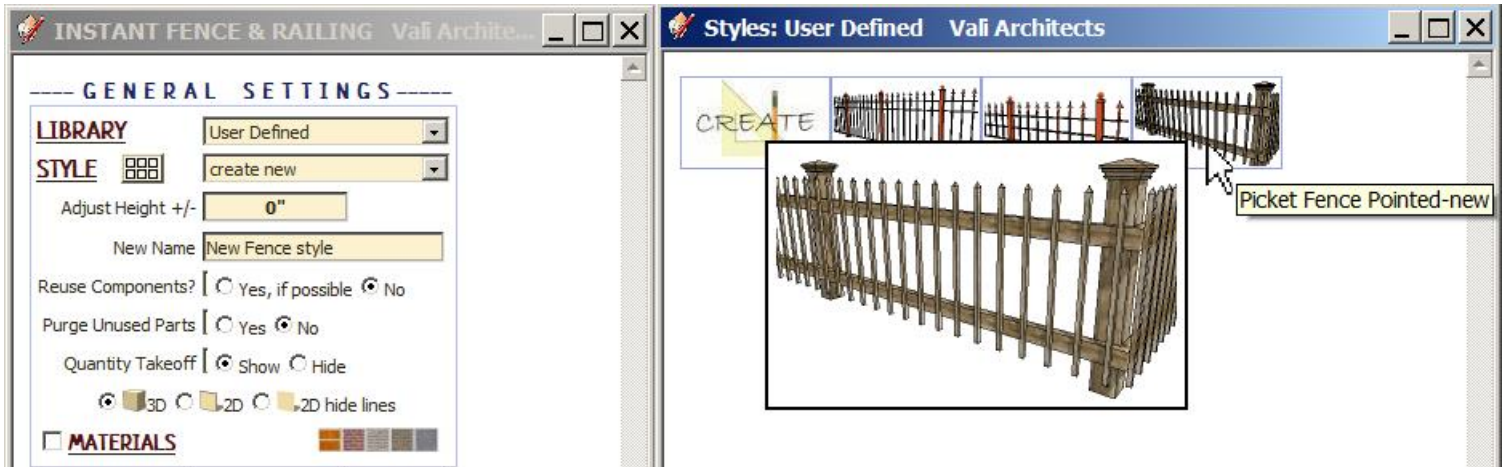
6. Selected "Save User Style".



7. Selected the new style "Picket Fence Pointed -new" and clicked "OK".

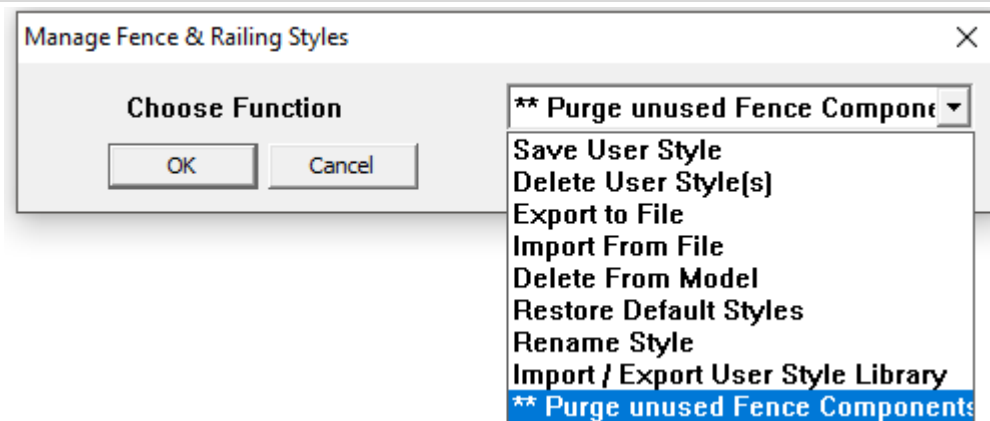


8. The new style “Picket Fence Pointed -new” is now displayed in the “User Defined” library and will be available to all SketchUp models and sessions. Both a thumbnail and enlarged image have been added to the menu.



Manage Styles

Choose “Plugins / Vali Architects / Instant Fence Railing / Manage styles” or click the  icon.



Save User Style: Creates Menu entry as described above.

Delete User Style(s): Erases saved User Styles and associated icons.

Export to File: Exports style to an external file

Import From File: Imports external style file

When a style is used in a drawing, that style - including any changes made to it - will be saved with the file and displayed in the “In Model” library. If a change is made to a preset style (but not given a new name) the preset style will be redefined and saved for that model only. This allows a model with customized styles to be saved as a template file. The next 3 methods permit modifications to these style definitions in the model.

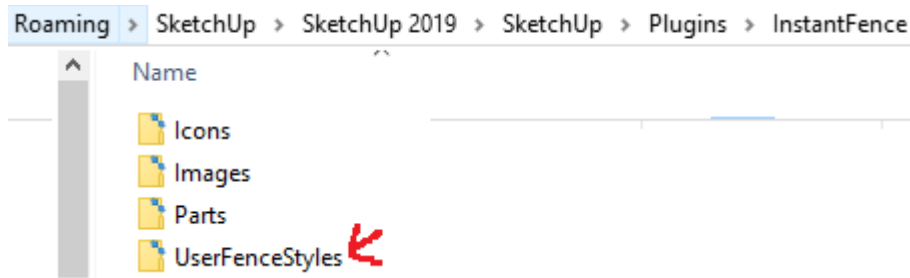
Delete From Model: Removes selected styles from the “In Model” library and restores preset style definitions.

Restore Default Styles: Removes ALL style definitions in the model. (Empties “In Model” library and removes any changes to preset styles that have been saved in the model.)

Rename Style Rename a style in the “In Model” library. If the style name to change matches a preset name, the preset style will be restored to default.

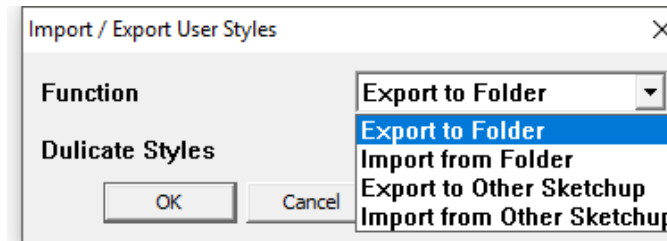
Purge unused Fence Components Use to delete unused Fence and Railing components that may have been created while getting a style just right. It is like Sketchup’s built in Purge Unused components but is specific to components made by this extension.

To use your User Styles on a different computer or different version of Sketchup, copy the contents of the UserFenceStyles folder to the same location in the other Sketchup plugins folder.



Alternatively, you can use the Import / Export methods shown below.

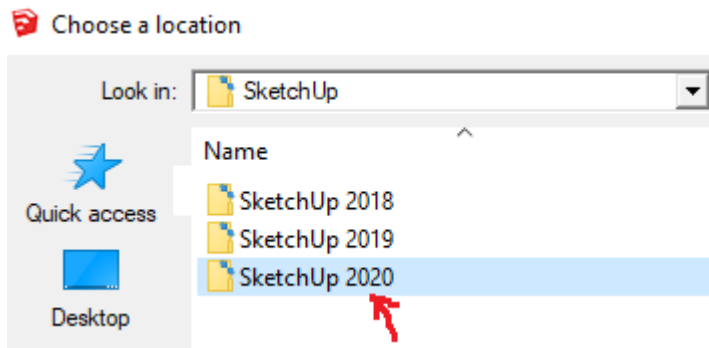
Import / Export User Style Library For copying your user styles to a different version of Sketchup or a different computer. (Note: you can also copy your user styles manually. They are found in your Sketchup Plugins folder for this extension.)



Export To Folder Copies the User Styles to a location on your computer that you select.

Import from Folder Copies a User Styles folder into Sketchup from a location you select.

Export To Other Sketchup When you upgrade to a different version of Sketchup, you can make your User Styles available in the new version by choosing it when prompted:



Import from Other Sketchup When you upgrade to a different version of Sketchup, you can make your User Styles available in the new version by choosing the old version of when prompted:

